

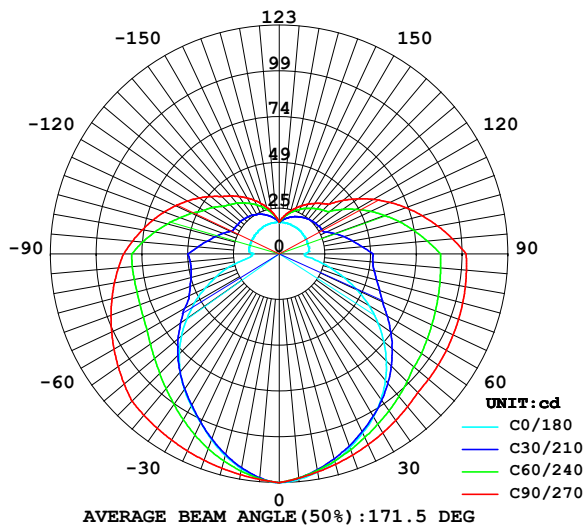
LUMINAIRE PHOTOMETRIC TEST REPORT

Report number:

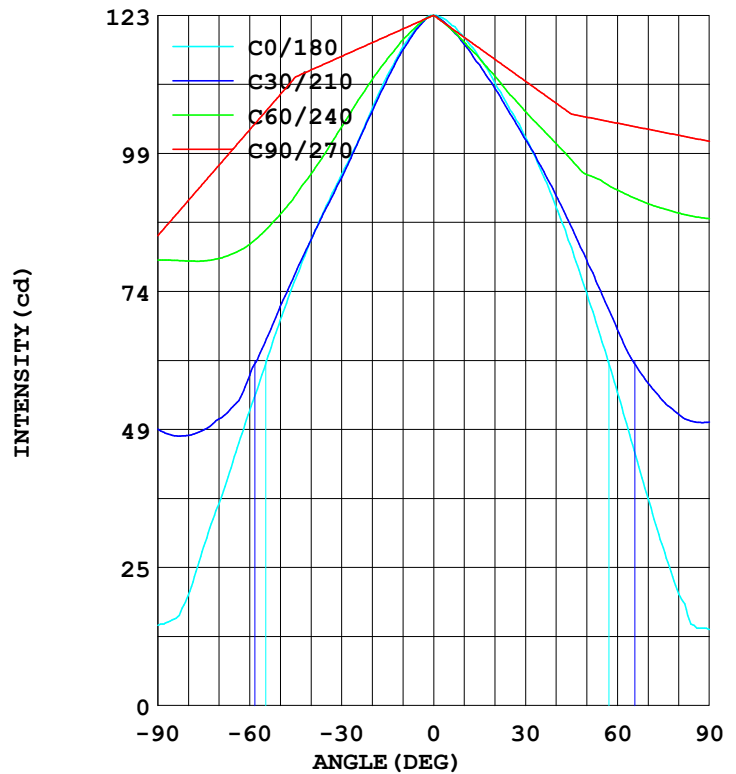
MANUFACTURER:	Address:	
NAME: 551014	TYPE:	WEIGHT:
SPECIFICATION:	DIMENSION:	SERIAL No.:

DATA OF LAMP		Imax(cd)	123.3	S/MH(C0/180)	1.15
MODEL		EFFICIENCY(%)	100.0	S/MH(C90/270)	1.43
NOMINAL POWER(W)	9	TOTAL FLUX(lm)	768.38	Voltage(V)	220.6
RATED VOLTAGE(V)	220	EFFICIENCY(lm/W)	82.6	Current(A)	0.081
NOMINAL FLUX(lm)	768.4	η up(%)	33.5	Power(W)	9.300
LAMPS QUANTITY	1	η down(%)	66.5	Power Factor(PF)	0.521
TEST VOLTAGE(V)	220.6	Effective Flux(lm)	768.4	EEI	0.150

LUMINOUS INTENSITY DISTRIBUTION



LUMINOUS INTENSITY DISTRIBUTION



Test System: HOPOO HPG1900
Temperature: 25.3 DEG
Operators:
Test Date: 2023年06月02日

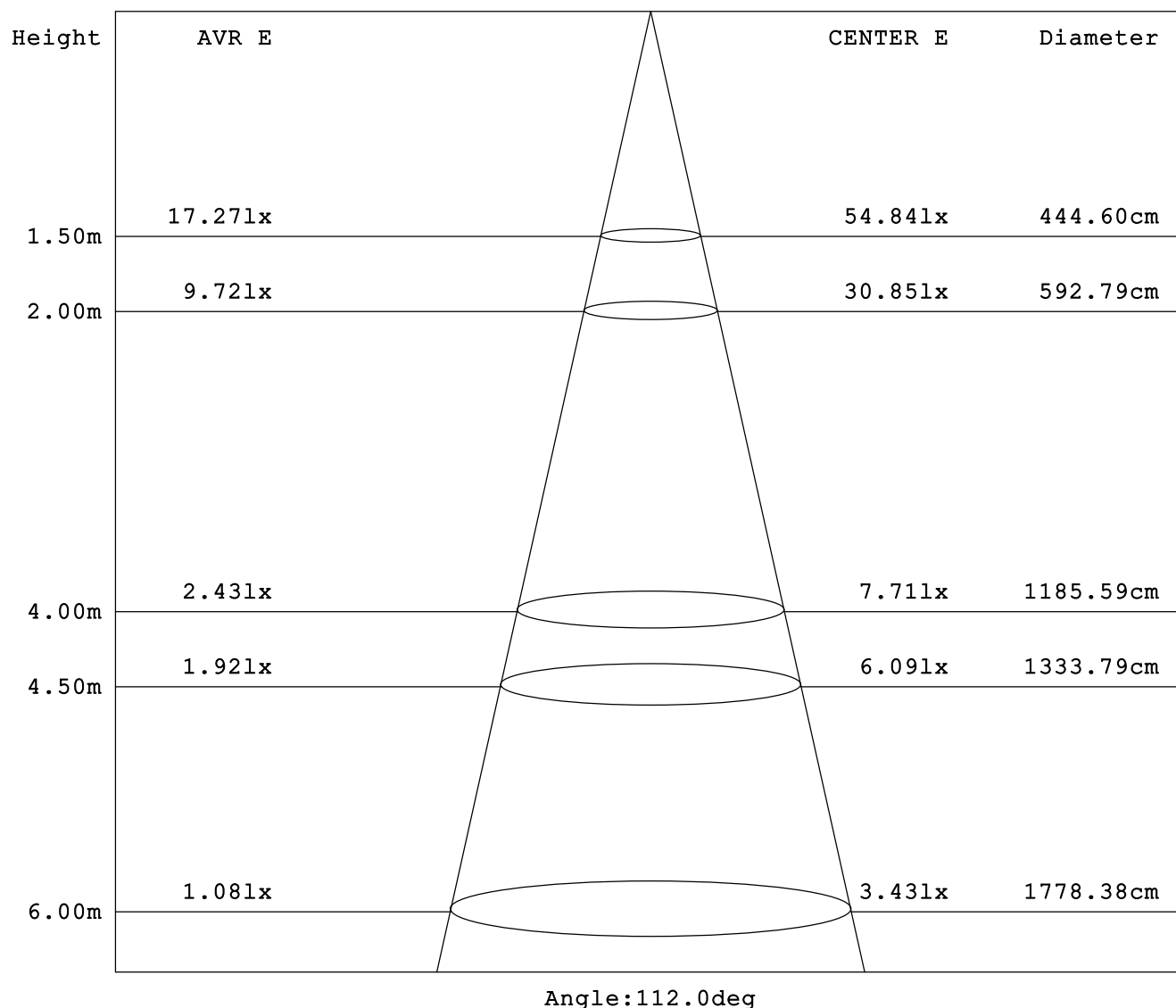
Test Set: 5.0deg/s B-Beta (TYPE B)
Humidity: 65.0%
Test Distance: 16.000 m
Remarks:

HONGPU GONIOPHOTOMETERS SYSTEM TEST REPORT

AVERAGE AND CENTER E Figure

Report number:

MANUFACTURER:	Address:	
NAME: 551014	TYPE:	WEIGHT:
SPECIFICATION:	DIMENSION:	SERIAL No.:



Test System:HOPOO HPG1900
Temperature:25.3DEG
Operators:
Test Date:2023年06月02日

Test Set: 5.0deg/s B-Beta (TYPE B)
Humidity:65.0%
Test Distance:16.000 m
Remarks:

HONGPU GONIOPHOTOMETERS SYSTEM TEST REPORT

ZONAL FLUX DIAGRAM

Report number:

MANUFACTURER:	Address:	
NAME: 551014	TYPE:	WEIGHT:
SPECIFICATION:	DIMENSION:	SERIAL No.:

γ	C0	C45	C90	C135	C180	C225	C270	C315	γ	Φ zone	Φ total
5.0	121.5	121.3	122.1	121.9	122.1	121.3	121.4	120.9	0- 5	2.924	2.924
10.0	117.7	117.7	120.9	119.6	119.5	118.3	119.4	117.0	5- 10	8.585	11.50
15.0	112.6	113.5	119.7	116.5	115.7	114.8	117.5	112.5	10- 15	13.86	25.37
20.0	106.7	108.4	118.4	113.2	111.3	111.1	115.5	107.2	15- 20	18.64	44.01
25.0	100.3	103.0	117.2	109.4	106.4	107.4	113.5	101.6	20- 25	22.86	66.88
30.0	94.97	97.89	116.0	105.5	101.6	103.5	111.6	96.21	25- 30	26.54	93.42
35.0	89.34	92.87	114.8	101.8	95.74	99.78	109.6	91.21	30- 35	29.66	123.0
40.0	83.19	88.14	113.6	98.39	89.08	95.77	107.6	86.40	35- 40	32.18	155.2
45.0	76.28	83.54	112.3	94.81	81.91	91.80	105.7	81.93	40- 45	34.09	189.3
50.0	68.86	78.84	109.2	90.97	73.72	87.73	105.1	77.47	45- 50	35.39	224.7
55.0	60.67	74.27	106.0	87.25	65.02	83.70	104.6	73.14	50- 55	36.18	260.9
60.0	52.73	72.31	102.9	84.11	56.06	80.59	104.1	71.99	55- 60	36.53	297.4
65.0	44.54	70.69	99.75	81.40	46.59	77.67	103.5	72.28	60- 65	36.53	334.0
70.0	36.09	69.75	96.59	79.46	37.11	75.22	103.0	72.89	65- 70	36.24	370.2
75.0	28.41	68.94	93.44	77.98	28.16	73.15	102.4	72.58	70- 75	35.78	406.0
80.0	19.71	68.78	90.28	76.97	19.96	71.55	101.9	72.67	75- 80	35.25	441.3
85.0	15.36	69.17	87.12	76.73	14.33	70.44	101.4	73.45	80- 85	34.95	476.2
90.0	14.33	70.14	83.96	76.80	13.56	69.88	100.8	74.75	85- 90	34.98	511.2
95.0	16.38	64.17	79.50	70.79	16.12	63.67	93.86	68.64	90- 95	33.73	544.9
100.0	16.63	58.69	75.03	64.99	16.38	57.89	86.86	62.92	95-100	31.04	576.0
105.0	16.63	53.62	70.57	59.71	16.38	52.30	79.87	57.73	100-105	28.29	604.3
110.0	16.63	48.82	66.10	54.75	16.38	47.21	72.87	52.75	105-110	25.54	629.8
115.0	16.63	44.01	61.63	49.94	16.38	42.02	65.87	47.58	110-115	22.81	652.6
120.0	16.63	39.34	57.17	45.33	16.38	36.91	58.87	42.76	115-120	20.16	672.8
125.0	16.63	34.89	52.70	41.10	16.63	31.85	51.88	37.57	120-125	17.65	690.5
130.0	16.63	33.65	48.24	38.85	16.63	30.63	44.88	35.20	125-130	15.31	705.8
135.0	16.63	32.59	43.77	36.81	16.89	29.53	37.88	33.20	130-135	13.19	719.0
140.0	16.89	31.10	40.81	34.60	16.89	28.41	35.58	31.28	135-140	11.42	730.4
145.0	16.89	29.90	37.85	32.43	16.89	27.09	33.27	29.43	140-145	9.785	740.2
150.0	17.15	28.30	34.90	30.29	16.89	25.94	30.97	27.63	145-150	8.186	748.4
155.0	17.15	26.70	31.94	28.05	16.89	24.69	28.67	25.76	150-155	6.637	755.0
160.0	17.15	24.95	28.98	25.85	17.15	23.30	26.36	24.04	155-160	5.166	760.2
165.0	17.15	23.16	26.02	23.62	17.15	21.81	24.06	22.25	160-165	3.792	763.9
170.0	17.15	21.23	23.06	21.43	17.15	20.30	21.76	20.50	165-170	2.534	766.5
175.0	17.15	19.21	20.11	19.26	17.15	18.75	19.45	18.69	170-175	1.411	767.9
180.0	17.15	17.15	17.15	17.15	17.15	17.15	17.15	17.15	175-180	0.435	768.3
DEG	LUMINOUS INTENSITY:cd								UNIT:lm		

Test System:HOPOO HPG1900
Temperature:25.3DEG
Operators:
Test Date:2023年06月02日

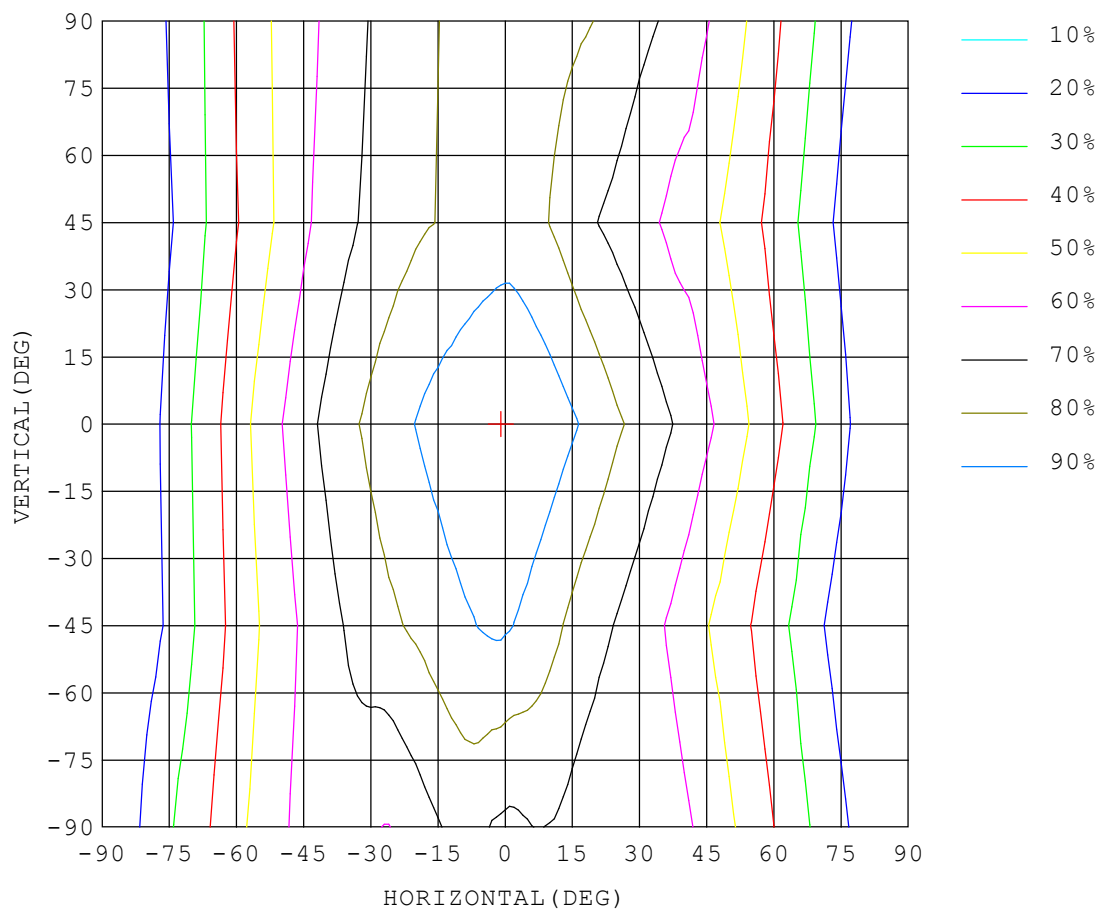
Test Set: 5.0deg/s B-Beta (TYPE B)
Humidity:65.0%
Test Distance:16.000 m
Remarks:

ISOCANDELA DIAGRAM

Report number:

MANUFACTURER:	Address:	
NAME: 551014	TYPE:	WEIGHT:
SPECIFICATION:	DIMENSION:	SERIAL No.:

UNIT: cd



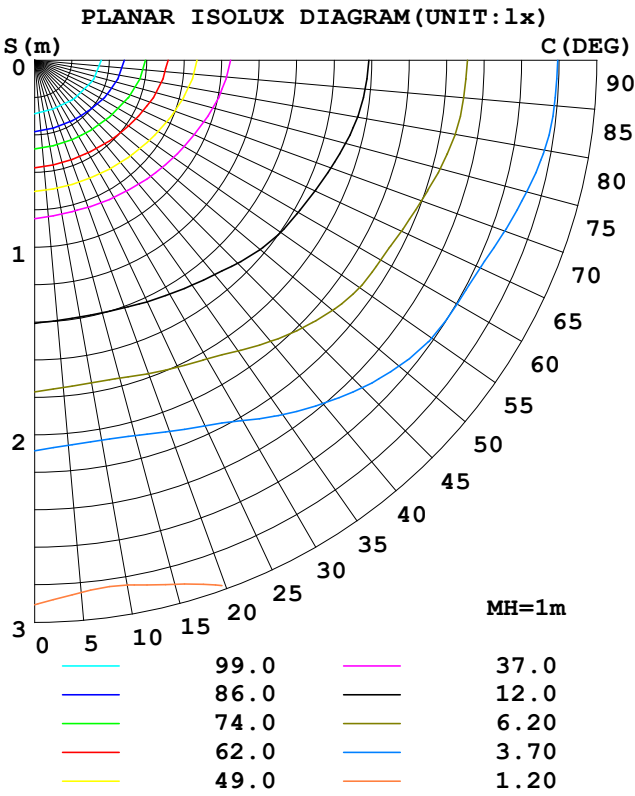
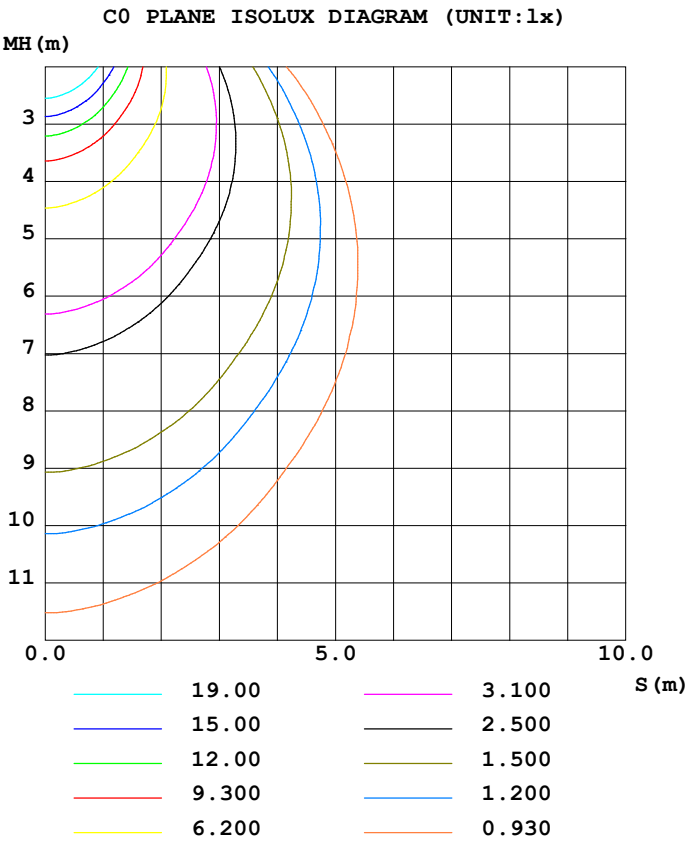
Test System:HOPOO HPG1900
Temperature:25.3DEG
Operators:
Test Date:2023年06月02日

Test Set: 5.0deg/s B-Beta (TYPE B)
Humidity:65.0%
Test Distance:16.000 m
Remarks:

ISOLUX DIAGRAM

Report number:

MANUFACTURER:	Address:	
NAME: 551014	TYPE:	WEIGHT:
SPECIFICATION:	DIMENSION:	SERIAL No.:



Test System:HOPOO HPG1900
Temperature:25.3DEG
Operators:
Test Date:2023年06月02日

Test Set: 5.0deg/s B-Beta (TYPE B)
Humidity:65.0%
Test Distance:16.000 m
Remarks:

HONGPU GONIOPHOTOMETERS SYSTEM TEST REPORT

LUMINOUS DISTRIBUTION INTENSITY DATA

Report number:

MANUFACTURER:	Address:	
NAME: 551014	TYPE:	WEIGHT:
SPECIFICATION:	DIMENSION:	SERIAL No.:

UNIT: cd

C (DEG) γ (DEG)	0	5	10	15	20	25	30	35	40	45	50	55	60	65	70
0.0	123	123	123	123	123	123	123	123	123	123	123	123	123	123	123
5.0	122	121	121	121	121	121	121	121	121	121	121	122	122	122	122
10.0	118	117	117	117	117	117	117	117	118	118	118	119	119	119	120
15.0	113	112	112	112	112	112	112	112	113	114	114	115	116	116	117
20.0	107	106	106	106	106	106	106	107	108	108	109	111	112	113	114
25.0	100	99.7	99.3	99.2	99.3	99.6	100	101	102	103	105	106	108	110	111
30.0	94.9	94.1	93.6	93.3	93.3	93.8	94.3	95.2	96.5	97.8	99.4	101	103	106	108
35.0	89.3	88.3	87.7	87.4	87.6	88.1	88.9	89.9	91.2	92.8	94.7	96.8	99.0	102	105
40.0	83.1	82.0	81.4	81.1	81.6	82.2	83.2	84.6	86.2	88.1	90.2	92.5	94.9	97.9	101
45.0	76.2	75.0	74.3	74.3	74.9	75.9	77.3	79.1	81.2	83.5	85.9	88.5	91.1	94.0	97.9
50.0	68.8	67.5	66.9	67.3	68.0	69.2	71.3	73.5	76.0	78.8	81.7	84.6	87.8	90.9	94.7
55.0	60.6	59.3	58.9	59.5	60.7	62.9	64.9	67.8	70.8	74.2	78.5	81.9	84.8	88.3	91.9
60.0	52.7	51.2	50.9	51.6	53.5	55.8	59.0	62.0	67.3	72.3	76.7	80.3	82.4	85.7	89.4
65.0	44.5	42.9	42.8	43.9	46.3	49.4	53.7	59.9	65.1	70.6	75.5	79.5	80.9	83.4	87.2
70.0	36.0	34.1	33.9	36.4	39.0	44.9	51.2	57.3	63.6	69.7	74.9	78.8	79.9	81.4	85.3
75.0	28.4	26.0	26.1	28.4	35.4	42.1	49.2	56.0	62.8	68.9	74.5	78.6	79.4	79.4	83.5
80.0	19.7	18.8	19.1	25.3	32.7	40.7	48.2	55.4	62.3	68.7	74.6	78.7	79.4	77.9	81.8
85.0	15.3	14.8	19.0	24.9	32.6	40.6	48.2	55.5	62.6	69.1	75.1	79.2	79.5	76.5	80.3
90.0	14.3	15.8	20.7	26.8	34.0	41.7	49.4	56.5	63.7	70.1	76.0	79.8	79.6	75.2	78.8
95.0	16.3	15.8	18.8	23.8	30.1	37.0	44.0	51.1	57.9	64.1	69.9	73.8	73.9	70.7	74.3
100.0	16.6	16.6	17.6	21.6	27.0	32.8	39.7	46.3	52.7	58.6	64.2	67.9	68.2	66.3	69.8
105.0	16.6	17.2	18.0	19.6	24.3	30.0	35.9	42.0	47.8	53.6	58.6	62.1	62.5	62.0	65.5
110.0	16.6	17.4	18.6	20.2	21.5	26.7	32.4	38.0	43.4	48.8	53.3	56.6	57.0	58.0	61.2
115.0	16.6	17.8	18.7	20.8	22.7	25.3	29.0	34.0	39.1	44.0	48.1	51.2	52.0	54.0	56.9
120.0	16.6	17.8	19.4	21.2	23.1	25.4	27.9	30.3	35.1	39.3	43.3	46.1	47.0	50.0	52.6
125.0	16.6	18.1	19.7	21.5	23.3	25.4	27.5	30.0	32.4	34.8	38.6	41.3	43.7	46.1	48.3
130.0	16.6	18.2	19.8	21.5	23.3	25.1	27.3	29.4	31.4	33.6	35.8	36.8	40.0	42.3	44.1
135.0	16.6	18.1	19.7	21.5	23.3	25.0	26.7	28.6	30.5	32.5	34.1	36.1	37.6	39.2	40.5
140.0	16.8	18.3	19.8	21.4	22.9	24.5	26.2	28.0	29.6	31.1	32.8	34.3	35.8	36.9	38.1
145.0	16.8	18.2	19.7	21.1	22.6	24.1	25.6	26.9	27.9	29.9	31.1	32.5	33.5	34.6	35.6
150.0	17.1	18.4	19.6	20.9	22.1	23.3	24.4	25.9	27.1	28.3	29.5	30.4	31.4	32.3	33.1
155.0	17.1	18.2	19.3	20.4	21.5	22.6	23.6	24.7	25.8	26.7	27.5	28.4	29.2	30.0	30.5
160.0	17.1	18.0	18.9	19.9	20.8	21.7	22.5	23.3	24.1	24.9	25.6	26.3	27.0	27.5	28.0
165.0	17.1	17.8	18.5	19.2	19.9	20.6	21.3	21.9	22.5	23.1	23.6	24.1	24.6	24.9	25.3
170.0	17.1	17.6	18.1	18.6	19.0	19.5	19.9	20.4	20.8	21.2	21.5	21.8	22.1	22.4	22.6
175.0	17.1	17.4	17.6	17.9	18.1	18.3	18.6	18.8	19.0	19.2	19.3	19.5	19.6	19.8	19.9
180.0	17.1	17.1	17.1	17.1	17.1	17.1	17.1	17.1	17.1	17.1	17.1	17.1	17.1	17.1	17.1

Test System:HOPOO HPG1900
Temperature:25.3DEG
Operators:
Test Date:2023年06月02日

Test Set: 5.0deg/s B-Beta (TYPE B)
Humidity:65.0%
Test Distance:16.000 m
Remarks:

HONGPU GONIOPHOTOMETERS SYSTEM TEST REPORT

LUMINOUS DISTRIBUTION INTENSITY DATA

Report number:

MANUFACTURER:	Address:		
NAME: 551014	TYPE:	WEIGHT:	
SPECIFICATION:	DIMENSION:	SERIAL No.:	

UNIT: cd

C (DEG) γ (DEG)	75	80	85	90	95	100	105	110	115	120	125	130	135	140	145
0.0	123	123	123	123	123	123	123	123	123	123	123	123	123	123	123
5.0	122	122	122	122	122	122	122	122	122	122	122	122	122	122	122
10.0	120	121	121	121	121	121	121	121	120	120	120	120	120	119	119
15.0	118	119	119	120	120	120	119	119	118	118	117	117	117	116	116
20.0	116	117	118	118	119	118	118	117	116	115	115	114	113	112	112
25.0	113	115	116	117	118	117	116	115	114	113	112	111	109	108	108
30.0	111	113	115	116	116	115	114	113	111	110	108	107	106	104	103
35.0	108	111	113	115	115	114	112	111	109	107	105	103	102	101	99.4
40.0	105	108	111	114	114	112	111	109	106	104	102	100	98.3	96.5	94.7
45.0	102	106	110	112	113	111	109	106	104	101	99.0	97.0	94.8	92.3	89.9
50.0	99.3	103	107	109	110	108	106	103	100	98.4	96.5	93.8	90.9	87.9	85.1
55.0	96.7	101	104	106	107	106	103	100	97.0	94.6	92.6	90.4	87.2	83.7	80.2
60.0	94.1	98.3	101	103	104	103	101	97.1	93.7	90.9	89.4	87.4	84.1	80.0	75.5
65.0	91.8	96.0	98.2	99.7	101	101	97.9	93.9	90.3	87.4	87.0	85.0	81.4	77.0	72.1
70.0	89.7	93.8	95.6	96.5	98.6	98.7	95.2	90.9	87.0	84.6	85.2	83.0	79.4	74.8	69.1
75.0	87.6	91.7	93.1	93.4	96.0	96.4	92.6	87.9	83.7	82.4	83.8	81.5	77.9	73.3	66.9
80.0	85.8	89.7	90.5	90.2	93.5	94.2	90.2	85.1	80.4	80.5	82.6	80.4	76.9	72.1	65.3
85.0	84.0	87.8	88.0	87.1	90.9	92.0	87.7	82.4	77.3	78.7	81.5	79.8	76.7	71.5	64.7
90.0	82.4	86.0	85.5	83.9	88.3	89.8	85.5	79.8	74.4	76.8	80.6	79.3	76.8	71.6	65.0
95.0	77.7	81.1	80.7	79.5	83.3	84.7	80.8	75.6	70.7	72.2	75.2	73.6	70.7	65.8	59.4
100.0	73.1	76.2	76.0	75.0	78.3	79.6	76.2	71.6	67.2	67.5	69.8	68.1	64.9	60.5	54.5
105.0	68.6	71.3	71.3	70.5	73.3	74.5	71.6	67.6	63.7	62.8	64.5	62.7	59.7	55.8	50.2
110.0	64.1	66.4	66.5	66.1	68.3	69.4	67.1	63.7	60.2	58.1	59.3	57.6	54.7	50.7	45.9
115.0	59.6	61.6	61.8	61.6	63.3	64.4	62.4	59.8	56.7	54.2	54.3	52.8	49.9	46.1	42.0
120.0	55.0	56.8	57.1	57.1	58.4	59.2	57.8	55.7	53.2	50.7	49.7	48.1	45.3	41.9	37.9
125.0	50.5	52.0	52.4	52.7	53.5	54.1	53.1	51.4	49.5	47.5	45.6	43.9	41.1	38.7	36.2
130.0	45.9	47.2	47.8	48.2	48.6	48.9	48.2	47.1	45.6	44.0	42.5	40.9	38.8	36.7	34.5
135.0	41.8	42.7	43.3	43.7	43.9	44.0	43.6	43.2	42.3	41.3	39.9	38.4	36.8	34.8	32.7
140.0	39.1	39.8	40.4	40.8	40.9	41.0	40.6	40.2	39.4	38.5	37.4	36.0	34.6	33.0	31.2
145.0	36.4	37.0	37.6	37.8	37.9	37.9	37.6	37.2	36.6	35.8	34.8	33.7	32.4	31.0	29.4
150.0	33.8	34.3	34.6	34.9	34.9	34.8	34.7	34.3	33.8	33.1	32.2	31.3	30.2	29.0	27.7
155.0	31.0	31.4	31.7	31.9	31.9	31.8	31.7	31.4	30.9	30.4	29.7	28.9	28.0	27.0	26.0
160.0	28.3	28.6	28.8	28.9	28.9	28.9	28.7	28.5	28.1	27.7	27.1	26.5	25.8	25.0	24.1
165.0	25.5	25.8	25.9	26.0	25.9	25.9	25.8	25.6	25.3	25.0	24.6	24.1	23.6	23.0	22.4
170.0	22.8	22.9	23.0	23.0	23.0	22.9	22.9	22.7	22.5	22.3	22.0	21.7	21.4	21.0	20.6
175.0	20.0	20.0	20.0	20.1	20.0	20.0	20.0	19.9	19.8	19.7	19.5	19.4	19.2	19.0	18.8
180.0	17.1	17.1	17.1	17.1	17.1	17.1	17.1	17.1	17.1	17.1	17.1	17.1	17.1	17.1	17.1

Test System:HOPOO HPG1900
Temperature:25.3DEG
Operators:
Test Date:2023年06月02日

Test Set: 5.0deg/s B-Beta (TYPE B)
Humidity:65.0%
Test Distance:16.000 m
Remarks:

HONGPU GONIOPHOTOMETERS SYSTEM TEST REPORT

LUMINOUS DISTRIBUTION INTENSITY DATA

Report number:

MANUFACTURER:	Address:		
NAME: 551014	TYPE:	WEIGHT:	
SPECIFICATION:	DIMENSION:	SERIAL No.:	

UNIT: cd

C (DEG) γ (DEG)	150	155	160	165	170	175	180	185	190	195	200	205	210	215	220
0.0	123	123	123	123	123	123	123	123	123	123	123	123	123	123	123
5.0	122	122	122	122	122	122	122	122	122	122	122	121	121	121	121
10.0	119	119	119	119	119	119	120	119	119	119	118	118	118	118	118
15.0	116	116	115	115	115	115	116	115	115	115	115	115	115	114	115
20.0	112	111	111	111	111	111	111	111	110	110	110	110	110	111	111
25.0	107	107	106	106	106	106	106	106	106	105	105	106	106	106	107
30.0	103	102	102	101	101	101	102	101	101	100	101	101	101	102	103
35.0	98.0	97.0	96.1	95.5	95.2	95.3	95.7	95.0	94.6	94.7	95.0	95.6	96.4	97.5	98.5
40.0	93.0	91.4	90.4	89.3	88.8	88.6	89.0	88.3	88.1	88.3	89.0	89.9	91.1	92.5	94.1
45.0	87.8	85.6	83.9	82.7	81.6	81.5	81.9	81.0	80.7	81.4	82.3	83.6	85.5	87.5	89.7
50.0	82.3	79.5	77.2	75.4	74.0	73.4	73.7	72.8	72.8	73.7	75.1	77.1	79.5	82.1	84.9
55.0	76.8	73.4	70.3	67.9	66.0	65.0	65.0	64.2	64.5	65.7	67.7	70.4	73.5	76.7	80.1
60.0	71.3	67.2	63.4	60.1	57.7	56.2	56.0	55.3	55.9	57.4	60.1	63.4	67.2	71.4	76.0
65.0	66.5	61.3	56.7	52.4	49.1	47.0	46.5	45.8	46.9	49.3	52.7	56.7	61.6	67.3	72.6
70.0	62.9	56.5	50.2	44.8	40.4	37.7	37.1	36.4	37.7	41.0	45.5	51.4	57.6	63.7	69.6
75.0	60.2	52.9	45.3	37.8	32.2	28.8	28.1	27.4	29.2	33.2	39.8	47.1	54.3	61.0	67.2
80.0	58.5	50.4	42.4	33.8	25.2	22.1	19.9	20.9	22.6	28.4	35.5	44.1	52.0	59.2	65.4
85.0	57.8	50.0	41.7	33.1	25.0	20.2	14.3	17.4	20.6	25.9	33.1	42.2	50.7	58.2	64.5
90.0	58.3	50.9	43.0	35.5	27.1	19.9	13.5	15.8	19.9	25.8	32.5	41.9	50.6	58.1	64.2
95.0	53.0	46.0	38.7	31.7	25.0	19.9	16.1	16.6	18.9	23.4	29.2	37.3	45.0	52.1	58.0
100.0	48.5	41.6	35.2	29.2	23.7	19.8	16.3	17.0	18.4	21.8	26.7	33.6	40.3	46.7	52.3
105.0	44.5	38.4	32.8	27.4	23.3	19.8	16.3	17.2	18.4	20.1	24.5	30.0	36.2	41.9	47.2
110.0	40.7	35.4	30.4	26.8	23.1	19.8	16.3	17.3	18.7	20.3	22.2	26.7	32.1	37.2	42.3
115.0	37.1	33.1	29.7	26.1	22.9	19.7	16.3	17.7	19.1	20.6	22.5	24.6	28.0	32.7	37.4
120.0	34.9	31.9	28.9	25.8	22.7	19.6	16.3	17.7	19.2	20.9	22.6	24.5	26.5	28.5	32.8
125.0	33.5	30.8	28.0	25.2	22.4	19.6	16.6	18.0	19.4	20.9	22.6	24.2	26.1	28.0	29.7
130.0	32.2	29.6	27.1	24.6	22.0	19.4	16.6	18.0	19.4	20.8	22.5	24.0	25.7	27.2	28.8
135.0	30.6	28.5	26.2	23.9	21.5	19.2	16.8	18.2	19.5	20.8	22.3	23.6	25.0	26.6	28.1
140.0	29.2	27.2	25.2	23.2	21.1	19.0	16.8	18.1	19.3	20.6	21.8	23.1	24.5	25.8	27.1
145.0	27.9	26.2	24.3	22.4	20.6	18.7	16.8	18.0	19.2	20.3	21.5	22.6	23.8	24.9	25.9
150.0	26.4	24.9	23.4	21.9	20.3	18.7	16.8	17.9	18.9	19.9	21.0	22.0	22.9	23.9	25.0
155.0	24.8	23.6	22.4	21.1	19.8	18.4	16.8	17.7	18.6	19.5	20.4	21.3	22.2	23.1	23.9
160.0	23.3	22.3	21.3	20.3	19.2	18.2	17.1	17.8	18.6	19.3	20.0	20.7	21.4	21.9	22.6
165.0	21.7	21.0	20.3	19.5	18.7	17.9	17.1	17.7	18.2	18.8	19.3	19.9	20.3	20.7	21.2
170.0	20.1	19.7	19.2	18.7	18.2	17.6	17.1	17.5	17.9	18.2	18.6	19.0	19.3	19.7	20.0
175.0	18.6	18.4	18.1	17.9	17.6	17.4	17.1	17.3	17.5	17.7	17.9	18.1	18.2	18.4	18.6
180.0	17.1	17.1	17.1	17.1	17.1	17.1	17.1	17.1	17.1	17.1	17.1	17.1	17.1	17.1	17.1

Test System:HOPOO HPG1900
Temperature:25.3DEG
Operators:
Test Date:2023年06月02日

Test Set: 5.0deg/s B-Beta (TYPE B)
Humidity:65.0%
Test Distance:16.000 m
Remarks:

HONGPU GONIOPHOTOMETERS SYSTEM TEST REPORT

LUMINOUS DISTRIBUTION INTENSITY DATA

Report number:

MANUFACTURER:	Address:		
NAME: 551014	TYPE:	WEIGHT:	
SPECIFICATION:	DIMENSION:	SERIAL No.:	

UNIT: cd

C (DEG) γ (DEG)	225	230	235	240	245	250	255	260	265	270	275	280	285	290	295
0.0	123	123	123	123	123	123	123	123	123	123	123	123	123	123	123
5.0	121	121	121	121	121	121	121	121	121	121	121	121	121	121	121
10.0	118	118	118	119	119	119	119	119	119	119	119	119	119	119	118
15.0	115	115	115	116	116	116	117	117	117	118	117	117	116	116	115
20.0	111	112	112	113	113	114	114	115	115	116	115	115	114	112	111
25.0	107	108	109	109	110	111	112	112	113	114	113	112	111	109	108
30.0	104	105	105	106	107	108	109	110	111	112	111	109	108	106	104
35.0	99.7	101	102	103	104	105	107	108	109	110	109	107	105	102	99.2
40.0	95.7	97.4	98.8	100	102	103	104	105	107	108	107	104	101	98.3	94.9
45.0	91.8	93.8	95.9	97.5	99.0	100	101	103	104	106	104	102	98.1	94.4	90.7
50.0	87.7	90.2	92.5	94.9	97.2	98.9	100	102	104	105	104	101	97.2	92.7	88.4
55.0	83.7	87.1	90.6	93.7	96.4	98.3	99.9	102	104	105	103	101	97.0	92.5	88.6
60.0	80.5	84.8	88.8	92.1	95.3	97.9	99.7	102	103	104	103	101	96.9	92.6	88.9
65.0	77.6	82.7	87.0	90.8	94.4	97.4	99.4	101	103	104	102	100	97.1	93.2	89.6
70.0	75.2	80.5	85.5	89.7	93.6	96.9	99.1	101	103	103	102	100	97.5	93.9	90.3
75.0	73.1	78.8	84.1	88.8	92.8	96.4	98.9	101	102	102	102	101	98.1	94.9	91.2
80.0	71.5	77.3	83.1	88.0	92.0	96.1	98.7	101	102	102	101	101	98.8	96.0	92.1
85.0	70.4	76.3	82.3	87.4	91.4	95.9	98.6	101	102	101	101	101	99.6	97.2	93.3
90.0	69.8	75.7	81.9	87.0	91.1	95.7	98.5	101	101	101	101	102	101	98.5	94.7
95.0	63.6	69.3	75.2	80.2	84.2	88.6	91.4	93.4	94.2	93.8	93.8	94.4	93.4	91.4	87.9
100.0	57.8	63.3	68.8	73.6	77.5	81.5	84.3	86.2	87.1	86.8	86.9	87.3	86.4	84.4	81.2
105.0	52.3	57.6	62.6	67.1	70.9	74.6	77.2	79.1	79.9	79.8	79.9	80.2	79.3	77.5	74.6
110.0	47.2	52.0	56.6	60.6	64.4	67.7	70.2	71.9	72.8	72.8	72.9	73.0	72.3	70.5	67.9
115.0	42.0	46.5	50.7	54.4	57.9	60.9	63.2	64.8	65.7	65.8	65.9	65.8	65.2	63.6	61.4
120.0	36.9	41.1	44.9	48.1	51.5	54.1	56.2	57.7	58.5	58.8	58.9	58.8	58.2	56.7	54.8
125.0	31.8	35.5	39.0	42.0	45.0	47.3	49.2	50.7	51.4	51.8	51.9	51.8	51.2	49.9	48.1
130.0	30.6	32.2	33.5	35.8	38.3	40.5	42.2	43.6	44.3	44.8	44.9	44.8	44.2	43.1	41.3
135.0	29.5	30.9	32.1	33.4	34.5	35.5	36.2	36.9	37.4	37.8	38.0	38.1	38.0	37.8	37.0
140.0	28.4	29.4	30.7	31.7	32.6	33.5	34.2	34.8	35.2	35.5	35.7	35.8	35.4	35.4	34.9
145.0	27.0	28.2	29.2	30.0	30.9	31.5	32.1	32.6	33.0	33.2	33.3	33.4	33.1	33.0	32.6
150.0	25.9	26.8	27.6	28.4	28.9	29.6	30.0	30.4	30.7	30.9	31.0	31.1	30.9	30.5	30.3
155.0	24.6	25.2	26.0	26.5	27.1	27.6	28.0	28.2	28.3	28.6	28.6	28.6	28.6	28.2	28.0
160.0	23.3	23.7	24.2	24.8	25.2	25.5	25.8	26.0	26.1	26.3	26.3	26.2	26.2	26.0	25.7
165.0	21.8	22.2	22.6	22.9	23.2	23.5	23.6	23.8	23.8	24.0	24.0	23.8	23.8	23.8	23.5
170.0	20.3	20.5	20.8	21.0	21.2	21.4	21.4	21.4	21.5	21.7	21.7	21.5	21.4	21.4	21.3
175.0	18.7	18.8	18.9	19.0	19.0	19.0	19.1	19.2	19.3	19.4	19.4	19.4	19.3	19.1	19.0
180.0	17.1	17.1	17.1	17.1	17.1	17.1	17.1	17.1	17.1	17.1	17.1	17.1	17.1	17.1	17.1

Test System:HOPOO HPG1900
Temperature:25.3DEG
Operators:
Test Date:2023年06月02日

Test Set: 5.0deg/s B-Beta (TYPE B)
Humidity:65.0%
Test Distance:16.000 m
Remarks:

HONGPU GONIOPHOTOMETERS SYSTEM TEST REPORT

LUMINOUS DISTRIBUTION INTENSITY DATA

Report number:

MANUFACTURER:	Address:		
NAME: 551014	TYPE:	WEIGHT:	
SPECIFICATION:	DIMENSION:	SERIAL No.:	

UNIT: cd

C (DEG) γ (DEG)	300	305	310	315	320	325	330	335	340	345	350	355
0.0	123	123	123	123	123	123	123	123	123	123	123	123
5.0	121	121	121	121	121	121	121	121	121	121	121	121
10.0	118	118	117	117	117	117	117	117	117	117	117	117
15.0	114	114	113	113	112	112	111	111	111	111	112	112
20.0	110	109	108	107	107	106	105	105	105	105	106	106
25.0	106	104	103	102	101	99.8	99.2	98.8	98.7	98.7	99.0	99.5
30.0	101	99.2	97.5	96.2	95.0	94.1	93.4	93.0	92.8	92.9	93.3	94.0
35.0	96.5	94.4	92.6	91.2	89.8	88.7	88.0	87.4	87.2	87.1	87.5	88.2
40.0	92.1	89.9	88.1	86.4	85.0	83.6	82.5	81.7	81.1	80.9	81.4	82.1
45.0	88.1	86.0	83.7	81.9	80.1	78.3	76.7	76.2	75.9	75.2	74.9	75.3
50.0	85.0	82.1	79.8	77.4	75.1	73.2	72.8	70.9	69.5	68.4	67.8	67.9
55.0	85.1	81.2	77.4	73.1	70.5	70.1	67.1	64.9	62.7	61.1	60.0	59.9
60.0	85.1	81.0	76.8	71.9	69.7	64.8	61.8	58.7	55.8	53.5	52.1	51.8
65.0	85.3	81.1	76.5	72.2	68.2	62.9	57.3	52.7	49.1	46.2	44.2	43.6
70.0	85.7	81.3	76.4	72.8	67.2	61.1	54.6	48.3	42.5	38.7	36.0	35.1
75.0	86.4	81.9	77.0	72.5	66.5	59.7	52.7	45.4	38.2	31.7	28.3	27.0
80.0	87.2	82.9	77.9	72.6	66.3	59.0	51.3	43.5	35.6	27.9	21.1	20.0
85.0	88.2	84.2	78.9	73.4	66.7	58.9	51.1	42.8	34.7	26.6	20.8	17.4
90.0	89.5	85.7	80.3	74.7	67.8	59.9	52.2	43.7	35.5	27.9	22.7	19.9
95.0	83.0	79.3	74.1	68.6	61.9	54.7	47.4	39.8	32.6	26.2	22.0	18.9
100.0	76.7	73.0	68.3	62.9	56.9	50.2	43.1	36.6	30.4	25.2	21.7	19.1
105.0	70.5	66.9	62.7	57.7	52.2	46.0	39.4	34.3	28.7	24.1	21.3	18.8
110.0	64.4	60.9	57.1	52.7	47.7	41.6	36.7	30.7	27.2	24.1	21.3	19.0
115.0	58.2	54.7	51.7	47.5	43.0	38.2	33.3	29.4	26.0	24.1	21.3	19.1
120.0	52.2	49.0	46.1	42.7	38.7	34.4	31.4	28.9	26.3	23.3	21.1	19.1
125.0	45.8	43.2	40.4	37.5	35.3	33.1	30.8	28.2	25.4	23.4	21.2	19.0
130.0	39.4	37.8	36.5	35.2	33.7	31.8	29.8	27.5	25.4	23.1	20.8	18.8
135.0	36.4	35.4	34.4	33.2	31.8	30.4	28.6	26.6	24.8	22.8	20.8	18.8
140.0	34.1	33.4	32.4	31.2	30.0	28.6	27.2	25.7	24.0	22.2	20.4	18.6
145.0	31.9	31.2	30.4	29.4	28.4	27.1	25.9	24.4	23.0	21.5	20.0	18.4
150.0	29.8	29.1	28.4	27.6	26.7	25.7	24.6	23.4	22.1	20.8	19.6	18.4
155.0	27.6	27.1	26.5	25.7	25.0	24.2	23.3	22.3	21.3	20.3	19.3	18.2
160.0	25.3	25.0	24.5	24.0	23.4	22.7	22.0	21.2	20.5	19.6	18.8	18.0
165.0	23.3	22.9	22.6	22.2	21.8	21.3	20.7	20.2	19.6	19.0	18.4	17.7
170.0	21.2	21.0	20.7	20.5	20.2	19.8	19.5	19.1	18.7	18.3	17.9	17.5
175.0	18.9	18.8	18.7	18.6	18.6	18.4	18.3	18.1	17.9	17.7	17.5	17.3
180.0	17.1	17.1	17.1	17.1	17.1	17.1	17.1	17.1	17.1	17.1	17.1	17.1

Test System:HOPOO HPG1900
Temperature:25.3DEG
Operators:
Test Date:2023年06月02日

Test Set: 5.0deg/s B-Beta (TYPE B)
Humidity:65.0%
Test Distance:16.000 m
Remarks: